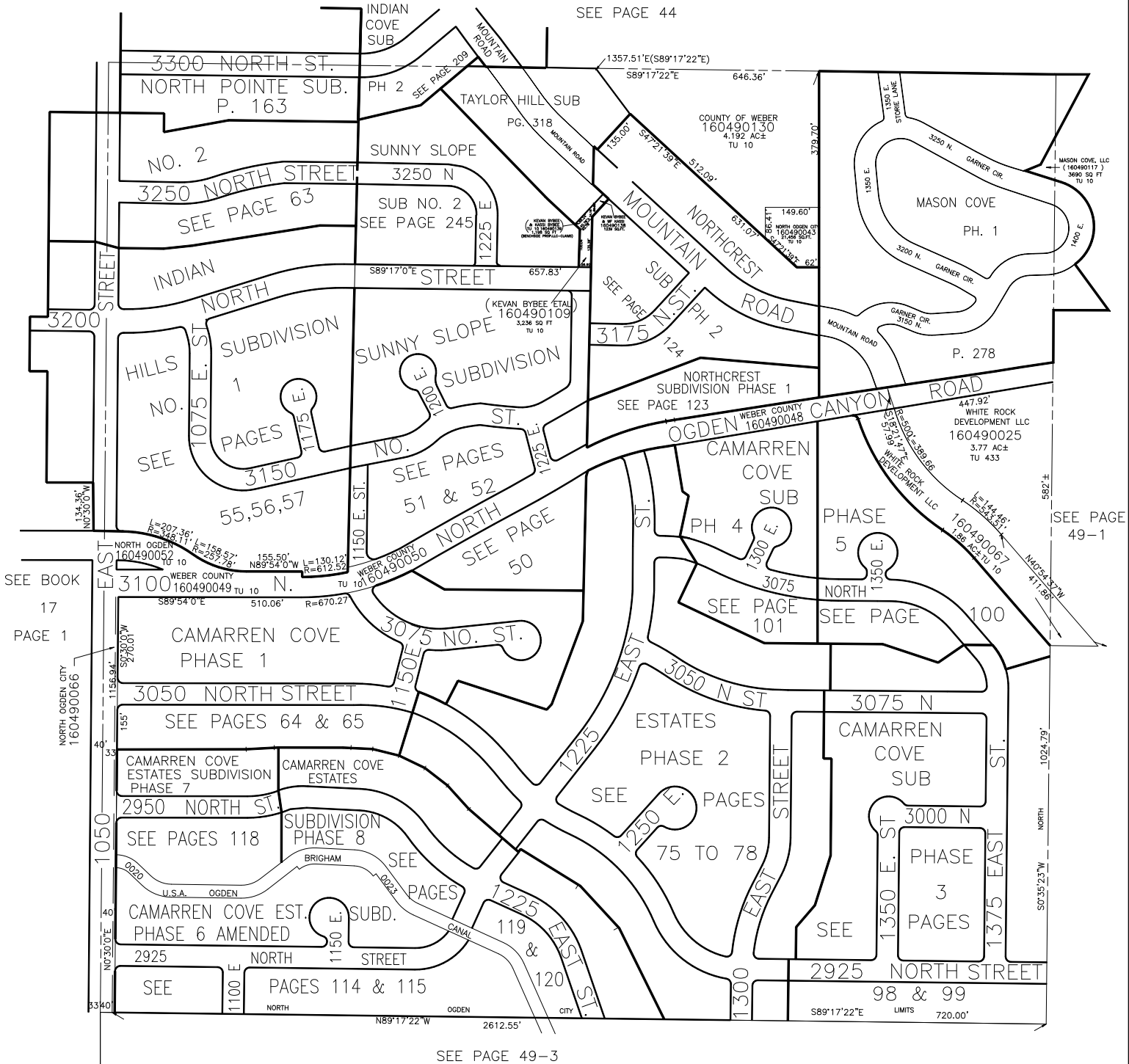


N.W. 1/4  
SECTION 27, T.7N., R.1W., S.L.B. & M.

IN NORTH OGDEN CITY  
SCALE 1" = 200'

TAXING UNIT: 10,433

SEE PAGE 44



SEE BOOK  
17  
PAGE 1

SEE PAGE  
49-1

SEE PAGE 49-3